

Quick Tips

ETHICS

IS DECIDING WHAT IS RIGHT OR MORE RIGHT IN A GIVEN SITUATION.

Examples of Behaviors and Practices Exemplifying Ethical Leadership:

- Expecting high performance of one-self and others
- Respect for excellence
- Putting oneself in another's shoes (empathy)
- Treating others with respect and care
- Elevating the values and aspirations of others rather than appealing to their wants and needs
- Standing up for one's beliefs
- Reinforcing responsible behavior
- Reinforcing communication expressing opposing views
- Questioning and possessing a willingness to change



Office of Campus Life Richland Community College

One College Park
Decatur, IL 62521

Phone: (217) 875-7200 Ext. 305

Fax: (217) 875-7783

E-mail: Campuslife@richland.edu

<http://www.richland.edu/campuslife>

ETHICS



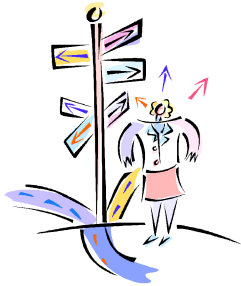
Leader Tips Leadership Development Tips for Groups



Office of Campus Life
Richland Community College

LEADership Mastery Program

Ethical Decision Making



Most decisions that leaders make involve some kind of choice. Many times it may not be a clear cut right or wrong issue, but involve a “judgment call” focusing on the leader’s and members’ values and

beliefs. For example, the issue of having alcohol at a party on campus is a clear cut decision because of College policies; however, having a party off campus at a location that could possibly serve alcohol to members of legal age involves a judgment call by the leader or members of the group.

Below are some questions that might help you deal with those “judgment call” decisions:

What is the dilemma?

- Should we have alcohol at our off-campus party?

What are the facts?

- More than 50% of our members are underage.
- Having alcohol at a party increases liability

What values are apparent in the situation?

- We shouldn’t need alcohol to have a good time
- Why shouldn’t the legal-aged members be able to drink if they so choose?
- Will we allow minors to drink?

Which values do I wish to advance here?

- Is it legal?
- Is it balanced or fair to all sides?
- How will it make me feel about myself?
- How will it make others feel?
- Which of the above values is most important to you?

What are the alternative courses of action/options?

- Choose a location that regulates alcohol laws and intake. Schedule the event at a licensed establishment.
- Monitor underage drinking
- Do not allow alcohol

What are the consequences, risks, and implications for each option?

- If you decide to monitor minor’s consumption, what will you do if you catch someone? If you do not allow alcohol, your liability decreases, but so might your attendance if it is for a Non-traditional student club gathering.

What is my decision?

- Choose the best alternative



Some other considerations that might help you sort things out:

- Ultimately I have to take responsibility for what I do and do not do
- Can I live with this decision?
- Is my action ultimately doing more good than harm?
- How is this decision affecting the “stakeholders” in this situation?
- Am I using excuses to justify my behavior?
- Would I be proud to have my decision placed in the headline news?
- Am I practicing the ‘Golden Rule’ - “Do unto others as you would have them do unto you”?

** The Office of Campus Life would like to thank the University of New Mexico, and the University of Kansas in aiding this publication.*

Office of Campus Life Richland Community College

Office of Campus Life
Richland Community College
One College Park
Decatur, IL 62521

Phone: (217) 875-7200 Ext. 305
Fax: (217) 875-7783
E-mail: Campuslife@richland.edu
<http://www.richland.edu/campuslife>